



## UNDERCOUNTER PLASMA FREEZERS



NSBF051

Designed to meet the AABB, ANRC and FDA requirements. Special cabinet incorporates industrial quality with a heavy duty refrigeration system to maintain your valuable products.

### SPECIFICATIONS FOR: NSBF051

- **Exterior finish:** The exterior front, door, top and sides are white. The back and bottom are galvanized steel. All exterior joints and seams fold in without lap joints. No exposed raw edges.
- **Interior finish:** Interior liner and interior door panel are aluminum.
- **Insulation:** The complete cabinet and door are foamed-in-place with high density polyurethane foam insulation.
- **Hardware:** Pull door handle, door lock, one adjustable gray epoxy coated shelf & four 4" legs.
- **Electrical:** 115/60/1 cord and plug furnished.
- **Refrigeration:** Base mount non-CFC refrigeration system. Factory preset at -30°C.
- **Approvals:** UL & C-UL LISTED.\*\*

### STANDARD FEATURES

- Air-cooled condensing unit
- Aluminum interior
- Automatic defrost
- 4" legs
- Door lock
- Galvanized back & bottom
- Gray epoxy coated shelf
- High density polyurethane foam insulation
- Hi/Lo alarm
- Magnetic gasketing
- Non-CFC refrigerant
- Factory preset at -30°C
- Remote contacts
- Stocked for same day shipment
- Temperature recording chart
- White enamel front, door, top & sides
- UL & C-UL LISTED\*\*
- Warranties: 1 year labor, 1 year parts, 5 year compressor

### OPTIONAL FEATURES\*

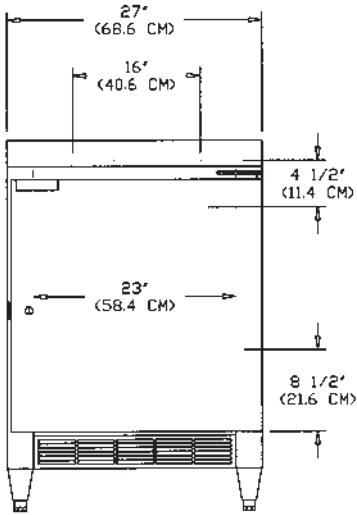
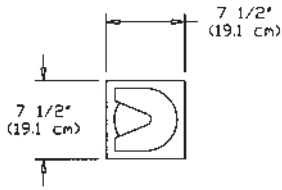
- Casters in lieu of legs
- 2" levelers in lieu of 4" legs
- Left hand door swing (from production only)
- Stainless steel exterior (Galv. back)
- Stainless steel interior
- White interior



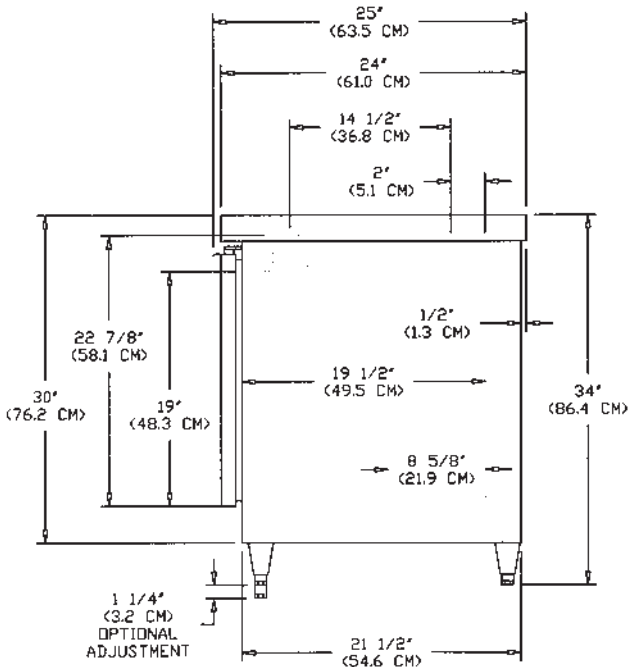
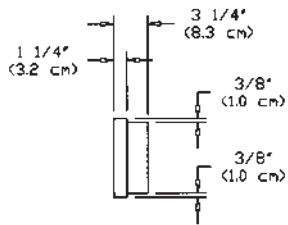
Nor-Lake, Inc.  
Registered to ISO 9001  
File No. A3204

\* Most options are available two weeks from receipt of order. Please contact us for specific questions.

\*\*C-UL is Underwriters Laboratories Safety Certification Mark which indicates that UL has tested the equipment to applicable CSA Standards.



NSBF051 - FRONT



NSBF051 - SIDE

**SPECIFICATIONS**

**NSBF051**

Crated Height	35"	(88.9 cm)
Crated Width	31-1/2"	(80 cm)
Crated Depth	28"	(71.1 cm)
Crated Weight (lbs)(kg)	210	(95.2 kg)
Interior Height	22-7/8"	(58.1 cm)
Interior Width	23"	(58.4 cm)
Interior Depth	19-1/2"	(49.5 cm)
Overall Height-Adjustable*	34" to	(86.4 cm to
	35-1/4"	89.5 cm)
Overall Width	27"	(68.6 cm)
Overall Depth	25"	(63.5 cm)
Gross Cubage (ft. <sup>3</sup> )(m <sup>3</sup> )	5.0	(0.14)
450 ML Bags # Units	80	
Shelf Area (sq.ft.)(sq.m)	3.1	(0.29)
Number of Shelves	1	
Number of Casters (Opt.)	4	Optional
Number of Legs (Std.)	4	Standard
Condensing Unit Size	1/2	
Refrigerant	R404A	
Electrical Characteristics	115/60/1	
Cord & Plug Furnished	Yes	
Maximum Fuse Size	15	
NEMA Plug Configuration	5-15P	
Total Amp Draw	7.6	

Specifications subject to change without notice.  
 \* The overall heights shown in the table and drawings are with 4" adjustable legs. With the 3-5/8" casters the overall height is 33-5/8". With 2" levelers the overall height is adjustable from 32" to 32-1/2".

