



UNDERCOUNTER BLOOD BANK REFRIGERATORS



NSBR051

Designed to meet the AABB, ANRC and FDA requirements. Special cabinet incorporates industrial quality with a heavy duty refrigeration system to maintain your valuable products.

SPECIFICATIONS FOR: NSBR051

- **Exterior finish:** The exterior front, door, top and sides are white painted enamel. The back and bottom are galvanized steel. All exterior joints and seams fold in without lap joints. No exposed raw edges.
- **Interior finish:** Interior liner and interior door panel are aluminum.
- **Insulation:** The complete cabinet and door are foamed-in-place with high density polyurethane foam insulation.
- **Hardware:** Pull door handle, door lock, one adjustable gray epoxy coated shelf & four 4" legs.
- **Electrical:** 115/60/1 cord and plug furnished.
- **Refrigeration:** Base mount refrigeration system. Undercounter/countertop refrigerators may be built in on three sides. The air intake and exhaust is through the base in front of the unit. Operating temperature within +1°C to +6°C. Factory preset to +4°C.
- **Approvals:** UL & C-UL LISTED.**

STANDARD FEATURES

- Air-cooled condensing unit
- Aluminum interior
- Automatic defrost
- 4" legs
- Door lock
- Expansion valve system
- Galvanized back & bottom
- Gray epoxy coated shelf
- High density polyurethane foam insulation
- Hi/Lo alarm
- Magnetic gasketing
- Non-CFC refrigerant
- Factory preset at +4°C
- Remote contacts
- Stocked for same day shipment
- Temperature recording chart
- White enamel front, door, top & sides
- UL & C-UL LISTED**
- Warranties: 1 year parts & labor, 5 year compressor

OPTIONAL FEATURES*

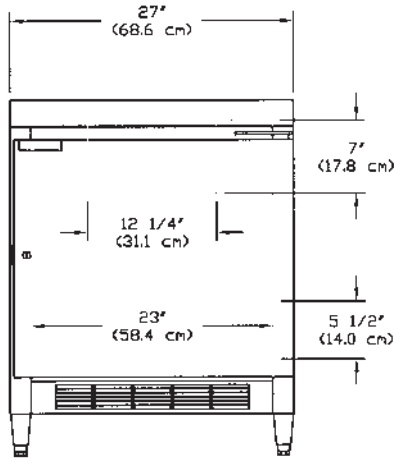
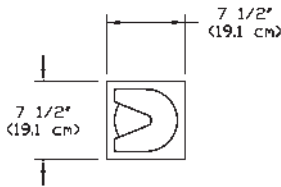
- Casters in lieu of legs
- 2" levelers in lieu of legs
- Stainless steel exterior (Galv. back)
- Stainless steel interior



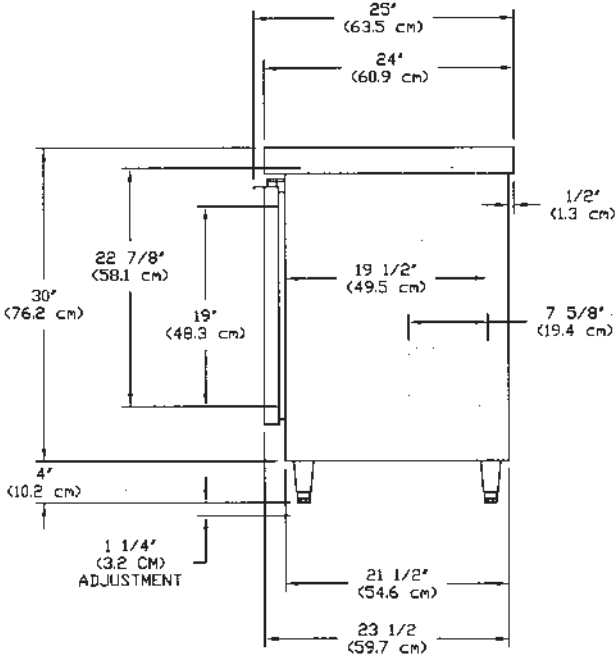
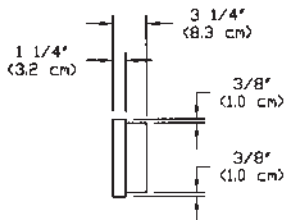
Nor-Lake, Inc.
Registered to ISO 9001
File No. A3204

* Most options are available two weeks from receipt of order. Please contact us for specific questions.

**C-UL is Underwriters Laboratories Safety Certification Mark which indicates that UL has tested the equipment to applicable CSA Standards.



NSBR051 - FRONT



NSBR051 - SIDE

SPECIFICATIONS

NSBR051		
Crated Height	35"	(88.9 cm)
Crated Width	31-1/2"	(80 cm)
Crated Depth	28"	(71.1 cm)
Crated Weight (lbs) (kg)	210	(95.2 kg)
Interior Height	22-7/8"	(58.1 cm)
Interior Width	23"	(58.4 cm)
Interior Depth	19-1/2"	(49.5 cm)
Overall Height-Adjustable*	34" to	(86.4 cm to
	35-1/4"	89.5 cm)
Overall Width	27"	(68.6 cm)
Overall Depth	25"	(63.5 cm)
Gross Cubage (ft. ³) (m ³)	5.1	(0.15)
450 ML Bags # Units	80	
Shelf Area (sq. ft.) (m ²)	3.1	(0.29)
Number of Shelves	1	
Number of Casters (Opt.)	4	Optional
Number of Legs (Std.)	4	Standard
Condensing Unit Size	1/5	
Refrigerant	R-134A	
Electrical Characteristics	115/60/1	
Cord & Plug Furnished	Yes	
Maximum Fuse Size	15	
NEMA Plug Configuration	5-15P	
Total Amp Draw	6.9	

Specifications subject to change without notice.

* The overall heights shown in the table and drawings are with 4" adjustable legs. With the 3-5/8" casters the overall height is 33-5/8". With 2" levelers the overall height is adjustable from 32" to 32-1/2".

