

NOR-LAKE SCIENTIFIC
 Division of Nor-Lake Incorporated
 727 Second Street
 P.O. Box 248
 Hudson, Wisconsin 54016

800-477-5253
 715-386-2323
 800-388-5253 Parts
 715-386-6149 FAX
 www.norlake.com

NORLAKE SCIENTIFIC



CHROMATOGRAPHY REFRIGERATOR

For A Wide Range of Chromatography Applications



NSCR211

NSCR482

NSCR763

Designed to meet the demanding requirements of Chromatography applications. Special cabinet incorporates industrial quality with a heavy duty refrigeration system to maintain your valuable products.

SPECIFICATIONS FOR: NSCR211, NSCR482 & NSCR763

- **Exterior finish:** Exterior front, sides and back are painted white. Glass doors are standard. The exterior top and bottom are galvanized steel. All exterior joints and seams fold in without lap joints. No exposed raw edges.
- **Interior finish:** Interior is painted white.
- **Insulation:** The complete cabinet is foamed-in-place with high density polyurethane foam insulation.
- **Hardware:** Heavy duty, pivot hinges and pull handles with centered key locks; self adjusting magnetic gaskets; 4" dia. casters (4 casters on one and two door models with 2 locking and six 6" legs on the three door model). 3 half size cantilevered solid stainless steel shelves per unit. Two 2" sleeves with covers.
- **Glass doors:** Full size, double pane glass doors with anti-condensate heater wires.
- **Electrical:** All models are standard with complete perimeter, anti-condensate door opening heater wires and an interior fluorescent light. One live vapor proof quadplex - standard.
- **Instrumentation:** Digital LED thermometer reading degree C.
- **Refrigeration:** Complete top mounted refrigeration system, not taking space from the storage area. A copper tube, aluminum fin evaporator is coated with a special acrylic to prevent deterioration from acidic materials. The condensate is collected and automatically evaporated from an electric evaporator pan increasing the efficiency of the system. Refrigerant flow is controlled by a thermostatic expansion valve increasing the ability of the refrigerator to meet varying load conditions. Ducted air flow assures uniformity of temperature throughout the unit. Adjustable control range from 2°C to 10°C. Factory preset to 4°C.

STANDARD FEATURES

- Air-cooled condensing unit
- Automatic condensate evaporation
- Automatic defrost
- Casters - 1 & 2 door
- 6" legs - 3 door
- Coated evaporator
- Digital LED thermometer
- Ducted air distribution
- Epoxy coated shelves
- 3 half size cantilevered stainless steel shelves, 1 side
- Expansion valve system
- Fluorescent interior light
- Full glass doors
- High density polyurethane foam insulation
- Key locks
- Magnetic gasketing
- Adjustable control range from 2°C to 10°C. Factory preset to 4°C.
- Two 2" sleeves with covers
- 1 live quadplex outlet
- White exterior
- White interior
- Stocked for same day shipment
- Warranties: 1 year parts and labor. 5 year compressor

OPTIONAL FEATURES*

- Alarm systems
- Custom paint
- Extra shelves
- Left or right hand hinges
- Legs in lieu of casters
- Solid doors
- Stainless steel exterior
- Stainless steel interior
- Temperature recorder

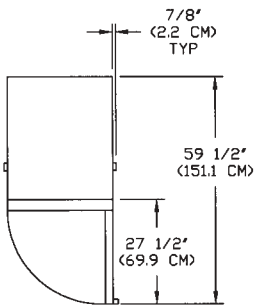


Nor-Lake, Inc.
 Registered to ISO 9001
 File No. A3204

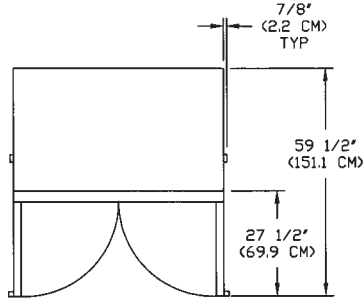
CHROMATOGRAPHY REFRIGERATOR

* Most options are available two weeks from receipt of order. Please contact us for specific questions.

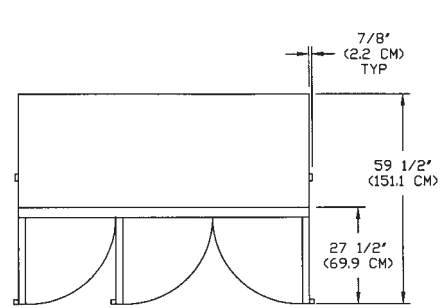
TOP



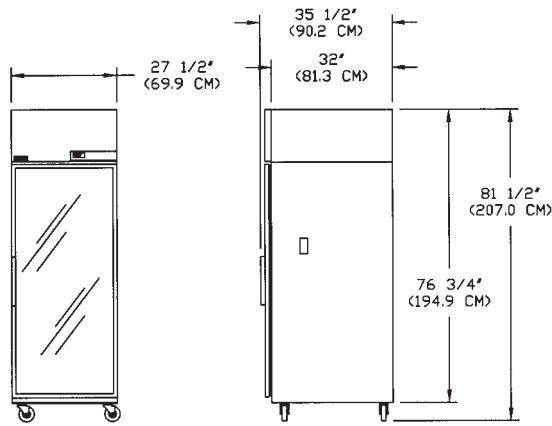
NSCR211



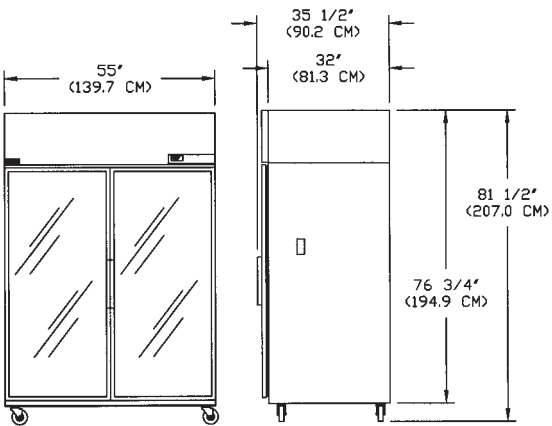
NSCR482



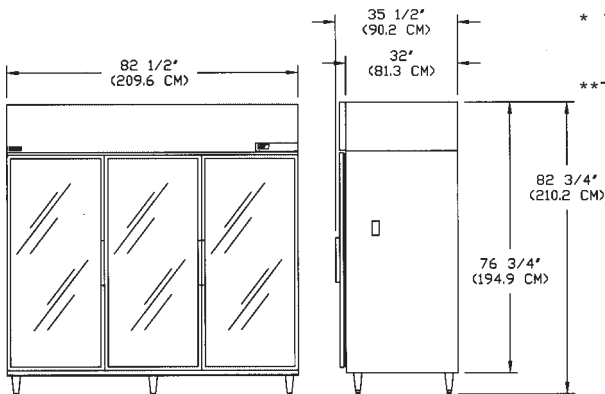
NSCR763



NSCR211



NSCR482



NSCR763

FRONT

SIDE

SPECIFICATIONS

	NSCR211	NSCR482	NSCR763
Crated Height (in) (cm)	81" (205.7 cm)	81" (205.7 cm)	81" (205.7 cm)
Crated Width (in) (cm)	31" (78.7 cm)	59" (149.9 cm)	86" (218.4 cm)
Crated Depth (in) (cm)	38" (96.5 cm)	38" (96.5 cm)	38" (96.5 cm)
Crated Weight (lbs) (kg)	365 (165.5 kg)	545 (247.2 kg)	750 (340.1 kg)
Interior Height (in) (cm)	59" (149.9 cm)	59" (149.9 cm)	59" (149.9 cm)
Interior Width (in) (cm)	23-1/2" (59.7 cm)	51" (129.5 cm)	78-1/2" (199.4 cm)
Interior Depth (in) (cm)	28" (71.1 cm)	28" (71.1 cm)	28" (71.1 cm)
Overall Height* (in) (cm)	81-1/2" (207.0 cm)	81-1/2" (207.0 cm)	82-3/4" (210.2 cm)
Overall Width (in) (cm)	27-1/2" (69.9 cm)	55" (139.7 cm)	82-1/2" (209.6 cm)
Overall Depth (in) (cm)	35-1/2" (90.2 cm)	35-1/2" (90.2 cm)	35-1/2" (90.2 cm)
Gross Cubage (ft. ³) (m ³)	22.5 (0.64)	48.8 (1.38)	75.0 (2.12)
Epoxy Coated Shelves	N/A	3	6
Number of Solid Stainless			
Steel Half Shelves	3	3	3
Number of Casters	4	4	6**
Number of Legs	4 (optional)	4 (optional)	6 (standard)
Condensing Unit Size	1/4	1/2	3/4
Refrigerant	R-22	R-22	R-22
Electrical Characteristics	115/60/1	115/60/1	115/208-230/60/1
Cord & Plug Furnished	Yes	Yes	No**
Maximum Fuse Size	15	15	15
NEMA Plug Configuration	5-15P	5-15P	N/A
Total Amp Draw	10	12	12

Specifications subject to change without notice.

* The overall heights shown in the table and drawings are with casters. With 6" legs, the overall height is 82-3/4" (210.2 cm).

**This model is available with a cord connection and casters. Consult the Factory.



Revision Date: 5/00
 NOR-LAKE, INC. 2000
 Printed in the U.S.A.
 Part Number: 077435