



# "S16RB" Stainless Steel Top Tables with RISERS

w/ 16 Gauge Stainless Steel Work Top  
w/ Stainless Steel Base and Bracing



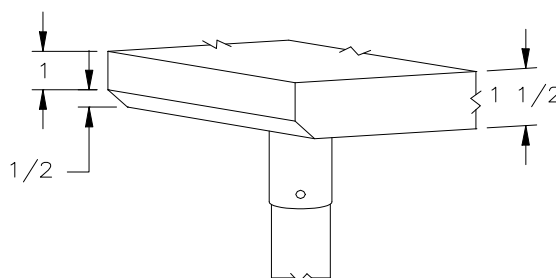
Shown Welded Set-up



16 GAUGE TOP w/ BRACING					
24"WIDE	Qty	30"WIDE	Qty	36"WIDE	Qty
S16052		S16058		-	
S16053		S16059		S16064	
S16054		S16060		S16065	
S16055		S16061		S16066	
S16056		S16062		S16067	
S16057		S16063		S16068	

### FEATURES:

- \* 16 Gauge Stainless Steel Top with 6" Riser  
Type 300 stainless steel with # 3 polish, satin finish
- \* Top is **Sound Deadened**
- \* Reinforced with 1"x2" channel running entire length of table
- \* 1 1/2" **Stallion Edge** on front and rear with side edges 90 degree bend down for table line-up
- \* Stainless Steel Base and Undersshelf  
Type 300 stainless steel with # 3 polish, satin finish
- \* Bracing adjustable to desired height
- \* Adjustable bullet feet
- \* Shipped knocked-down, easy - to - assemble
- \* Optional drawers, casters, pot racks, etc. available
- \* All models are approved by the National Sanitation Foundation and the U.S. Department of Agriculture.



STALLION  
SAFETY  
EDGE

### CONSTRUCTION:

Top: Stainless Steel Tops are TIG welded, Exposed welds are polished to match adjacent surface.

### MATERIAL:

Top: 16 gauge stainless Steel  
Type 300 stainless steel with # 3 polish, satin finish

Bracing: 1 1/4" Round O.D. 18 gauge type 300 tubular stainless steel  
# 3 polish, satin finish

Legs: 1 5/8" Round O.D., 16 gauge type 300 tubular stainless steel  
# 3 polish, satin finish

Gussets: Stainless steel

Feet: 1" adjustable galvanized bullet feet  
with optional stainless steel feet

### OPTIONAL ACCESSORIES

	MODEL #	Qty
DRAWER		
DRAWER LOCK		
CASTERS		
STAINLESS STEEL FEET		
OVERSHELVES		
SINKS		
POT RACK		
WELDED SET-UP		

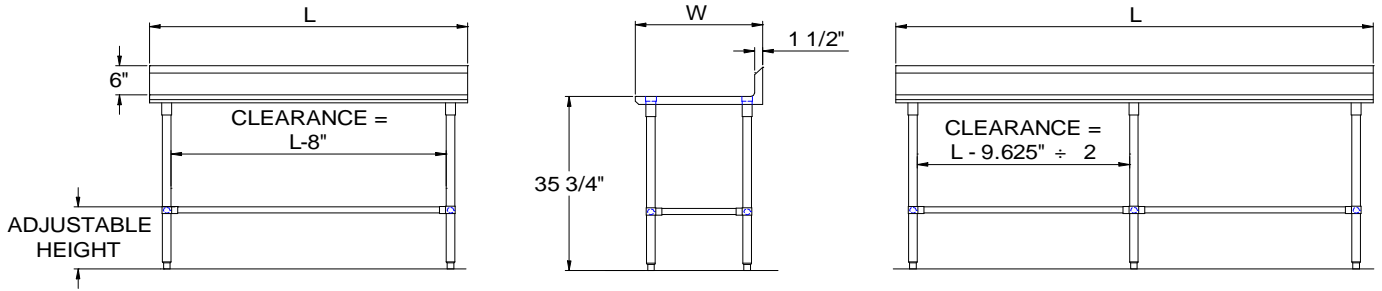
## John Boos & Co

315 South First Street - Effingham, IL 62401  
Phone: 217-347-7701 - Fax: 217-347-7705  
Email: sales@johnboos.com - Web-site: www. johnboos.com

## DETAILED SPECIFICATIONS



30" and 36" wide Tables 48" and 60" long are supplied with three channels, two the length of table and one centered front to back. All other 30" and 36" wide Tables over 72" are supplied with four channels, two length of Table and two front to back evenly spaced between two length channels.



All units ship unassembled for reduced shipping cost.  
 Units 7 ft. and larger are furnished with six legs.  
 All dimensions are typical.  
 Tolerance +/- .500".

### 16 GAUGE TOP & BRACING

L	24" WIDE	WT.	30" WIDE	WT.	36" WIDE	WT.
36	S16052	50	S16058	54	-	-
48	S16053	60	S16059	66	S16064	62
60	S16054	70	S16060	77	S16065	72
72	S16055	79	S16061	88	S16066	84
96	S16056	108	S16062	119	S16067	113
120	S16057	128	S16063	141	S16068	134

### John Boos & Co

315 South First - Effingham, IL 62401 Phone: 217-347-7701 - Fax: 217-347-7705  
 Email: sales@johnboos.com - Web-site: www.johnboos.com



May 2002

**John Boos** is constantly engaged in a program of improving products and therefore reserves the right to change specification without prior notice