



"S14GB" Stainless Steel Top Work Tables

w/ 14 Gauge Stainless Steel Work Top
w/ Galvanized Base and Bracing



**ULTRA PREMIUM
SERIES**

14 GAUGE TOP w/ BRACING					
24"WIDE	Qty	30"WIDE	Qty	36"WIDE	Qty
S14103		S14109		-	
S14104		S14110		S14115	
S14105		S14111		S14116	
S14106		S14112		S14117	
S14107		S14113		S14118	
S14108		S14114		S14119	

FEATURES:

- * 14 Gauge Stainless Steel Top
Type 300 stainless steel with # 3 polish, satin finish
- * Top is **Sound Deadened**
- * Reinforced with 1"x2" channel running entire length of table
- * 1 1/2" **Stallion Edge** on front and rear with side edges 90 degree bend down for table line-up
- * Galvanized Base and Bracing
100% pre-galvanized steel - **Not Plated**
- * Bracing adjustable to desired height
- * Adjustable bullet feet
- * Shipped knocked-down, easy - to - assemble
- * Optional drawers, casters, pot racks, etc. available
- * All models are approved by the National Sanitation Foundation and the U.S. Department of Agriculture.

CONSTRUCTION:

Top: Stainless Steel Tops are TIG welded, Exposed welds are polished to match adjacent surface.

MATERIAL:

Top: 14 gauge stainless Steel
Type 300 stainless steel with # 3 polish, satin finish

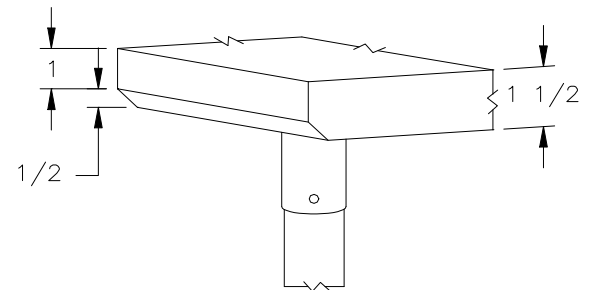
Bracing: 1 1/4" Round O.D. 18 gauge tubular galvanized steel
100% pre-galvanized steel - **Not Plated**

Legs: 1 5/8" Round O.D., 16 gauge tubular galvanized steel
100% pre-galvanized steel - **Not Plated**

Gussets: Galvanized Steel

Feet: 1" adjustable galvanized bullet feet

Note: "S14GB" standard w/stallion edge front and rear. For 1 1/2" backsplash, use prefix "U" I.E. UESSO69, same price.



STALLION
SAFETY
EDGE

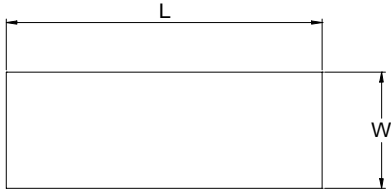
**OPTIONAL
ACCESSORIES**

	MODEL #	Qty
DRAWER		
DRAWER LOCK		
CASTERS		
STAINLESS STEEL FEET		
OVERSHELVES		
SINKS		
POT RACK		
WELDED SET-UP		

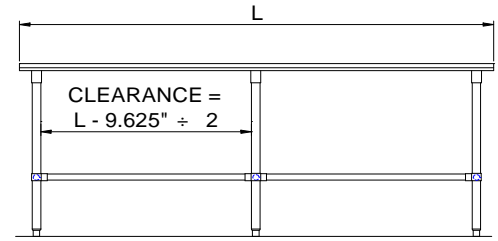
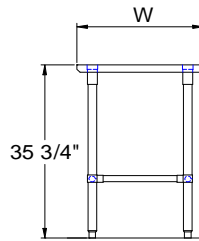
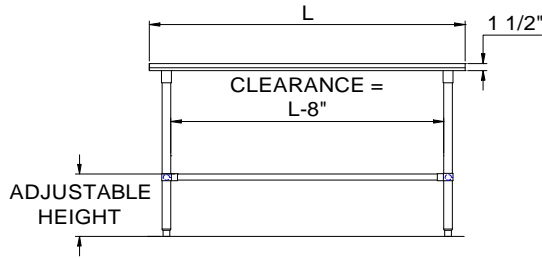
John Boos & Co

315 South First Street - Effingham, IL 62401
Phone: 217-347-7701 - Fax: 217-347-7705
Email: sales@johnboos.com - Web-site: www. johnboos.com

DETAILED SPECIFICATIONS



30" and 36" wide Tables 48" and 60" long are supplied with three channels, two the length of table and one centered front to back. All other 30" and 36" wide Tables over 72" are supplied with four channels, two length of Table and two front to back evenly spaced between two length channels.



All units ship unassembled for reduced shipping cost.

Units 7 ft. and larger are furnished with six legs.

All dimensions are typical.

Tolerance +/- .500".

14 GAUGE TOP & BRACING

L	24" WIDE	WT.	30" WIDE	WT.	36" WIDE	WT.
36	S14103	50	S14109	55	-	-
48	S14104	60	S14110	67	S14115	75
60	S14105	70	S14111	79	S14116	88
72	S14106	80	S14112	91	S14117	101
96	S14107	109	S14113	122	S14118	136
120	S14108	129	S14114	146	S14119	163

John Boos & Co

315 South First - Effingham, IL 62401 Phone: 217-347-7701 - Fax: 217-347-7705

Email: sales@johnboos.com - Web-site: www.johnboos.com



May 2002

John Boos is constantly engaged in a program of improving products and therefore reserves the right to change specification without prior notice