



# "S14" Stainless Steel Top Work Tables

w/ 14 Gauge Stainless Steel Work Top  
w/ Stainless Steel Base and Undershaft



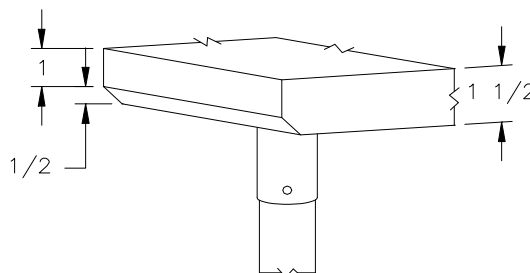
**ULTRA PREMIUM  
SERIES**

14 GAUGE TOP w/ UNDERSHAFT					
24"WIDE	Qty	30"WIDE	Qty	36"WIDE	Qty
S14001		S14007		-	
S14002		S14008		S14013	
S14003		S14009		S14014	
S14004		S14010		S14015	
S14005		S14011		S14016	
S14006		S14012		S14017	

**FEATURES:**

- \* 14 Gauge Stainless Steel Top  
Type 300 stainless steel with # 3 polish, satin finish
- \* Top is **Sound Deadened**
- \* Reinforced with 1"x2" channel running entire length of table
- \* 1 1/2" **Stallion Edge** on front and rear with side edges 90 degree bend down for table line-up
- \* Stainless Steel Base and Undershaft  
Type 300 stainless steel with # 3 polish, satin finish
- \* Undershaft is secured in a fixed position, 12" above floor
- \* Adjustable bullet feet
- \* Shipped knocked-down, easy - to - assemble
- \* Optional drawers, casters, pot racks, etc. available
- \* All models are approved by the National Sanitation Foundation and the U.S. Department of Agriculture.

Note: "S14" standard w/stallion edge front and rear. For 1 1/2" backsplash, use prefix "U" I.E. UESS069, same price.



STALLION  
SAFETY  
EDGE

**CONSTRUCTION:**

Top: Stainless Steel Tops are TIG welded, Exposed welds are polished to match adjacent surface.

**MATERIAL:**

- Top: 14 gauge stainless Steel  
Type 300 stainless steel with # 3 polish, satin finish
- Shelf: 18 gauge type 300 stainless steel # 3 polish, satin finish  
\*\* 6 ft. table only, 16 gauge type 300 stainless steel  
# 3 polish, satin finish
- Legs: 1 5/8" Round O.D., 16 gauge type 300 tubular stainless steel  
# 3 polish, satin finish
- Gussets: Stainless Steel
- Feet: 1" adjustable galvanized bullet feet  
with optional stainless steel feet

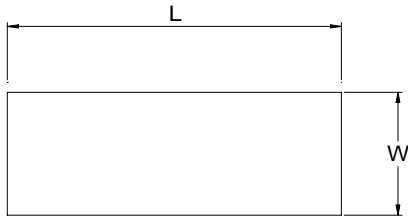
**OPTIONAL  
ACCESSORIES**

	MODEL #	Qty
DRAWER		
DRAWER LOCK		
ADJUSTABLE SHELF		
CASTERS		
STAINLESS STEEL FEET		
OVERSHELVES		
SINKS		
POT RACK		
WELDED SET-UP		

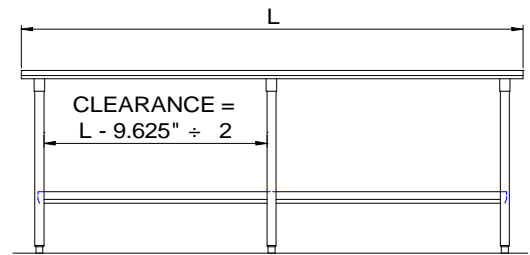
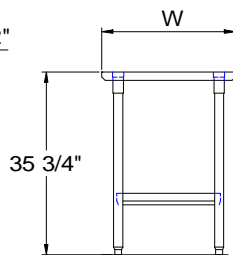
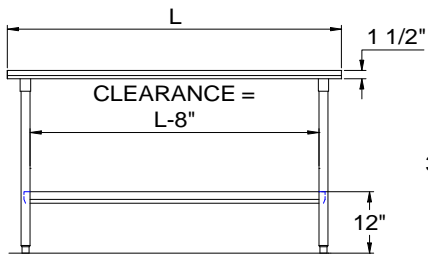
**John Boos & Co**

315 South First Street - Effingham, IL 62401  
Phone: 217-347-7701 - Fax: 217-347-7705  
Email: sales@johnboos.com - Web-site: www. johnboos.com

## DETAILED SPECIFICATIONS



30" and 36" wide Tables 48" and 60" long are supplied with three channels, two the length of table and one centered front to back. All other 30" and 36" wide Tables over 72" are supplied with four channels, two length of Table and two front to back evenly spaced between two length channels.



All units ship unassembled for reduced shipping cost.  
Units 7 ft. and larger are furnished with six legs.  
All dimensions are typical.  
Tolerance +/- .500".

Finished size of undershelf.  
Shelf length = length minus 4.875"  
Shelf width = width minus 4.25"

### 14 GAUGE TOP & UNDERSHELF

L	24" WIDE	WT.	30" WIDE	WT.	36" WIDE	WT.
36	S14001	56	S14007	69	-	-
48	S14002	70	S14008	80	S14013	91
60	S14003	83	S14009	96	S14014	109
72	S14004	96	S14010	112	S14015	128
96	S14005	131	S14011	151	S14016	172
120	S14006	157	S14012	183	S14017	209

### John Boos & Co

315 South First - Effingham, IL 62401 Phone: 217-347-7701 - Fax: 217-347-7705  
Email: sales@johnboos.com - Web-site: www.johnboos.com



May 2002

**John Boos** is constantly engaged in a program of improving products and therefore reserves the right to change specification without prior notice